

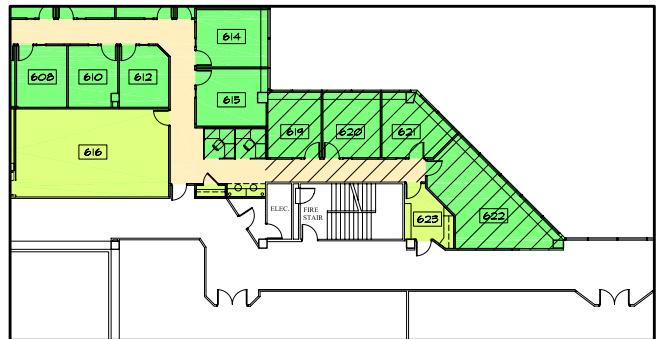


*Because first impressions last*

**Floor Plans for:  
The Private Office  
800 Westchester Avenue  
Suite N-611 and N-641  
Rye Brook NY 10573  
Contact: Sales Director  
914•697•4700**



**SUITE A  
2,475 SQ.FT.**

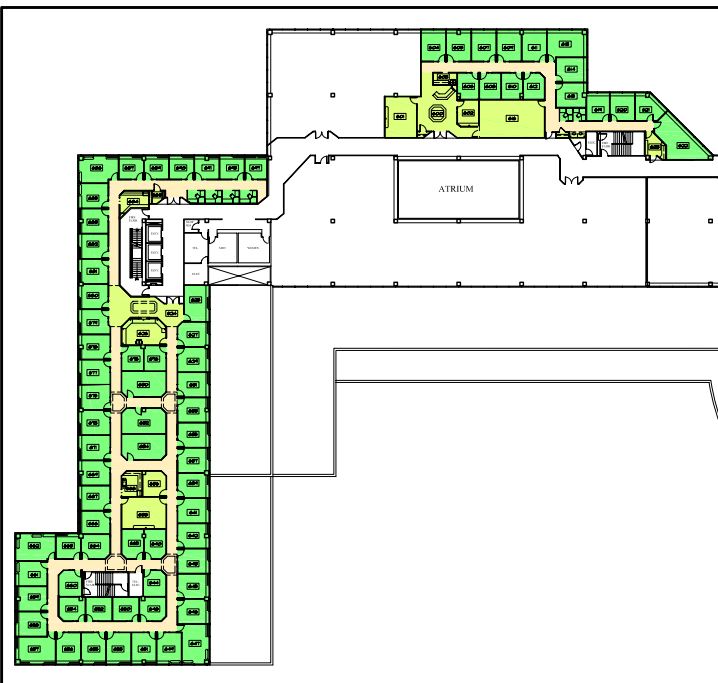


**ENLARGED PLAN - SUITE A**  
SCALE: NOT TO SCALE

**SUITE B  
1,998 SQ.FT.**

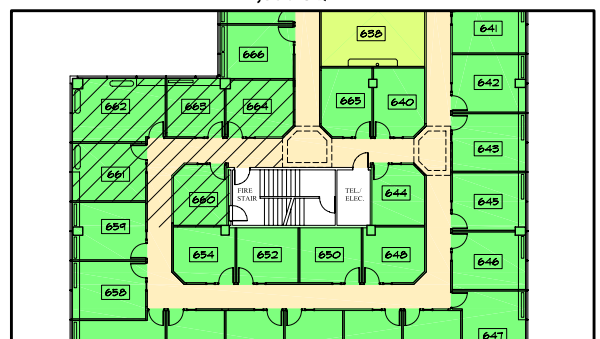


**ENLARGED PLAN - SUITE B**  
SCALE: NOT TO SCALE



**FLOOR PLAN**  
SCALE: NOT TO SCALE

**SUITE C  
2,096 SQ.FT.**



**ENLARGED PLAN - SUITE C**  
SCALE: NOT TO SCALE

**Directions to:  
The Private Office**

800 Westchester Avenue  
Suite N-611 and N-641  
Rye Brook NY 10573

**From Northern Westchester**

Take I-684 south to I-287 east. Take I-287 east to exit 10 (Purchase/120A). Go straight off the exit onto Westchester Avenue which takes you under 287. Go just past 2nd light. Take the next right into 800 Westchester Avenue Visitor's Entrance.

**From Rockland County**

Take the Tappan Zee Bridge to I-287 east. Take exit 10 (Purchase/120A) on I-287, then follow directions from Northern Westchester.

**From the Merritt Parkway**

Heading south, the Merritt Parkway will turn into the Hutchinson Parkway. Take exit 28 (Lincoln Avenue). Turn left onto Lincoln Avenue and go to the end of Lincoln Avenue. Take a right at the light and then the next left into 800 Westchester Avenue Visitor's Entrance.

**From the Hutchinson Parkway**

Heading north, take the Hutchinson Parkway to exit 26E (Rye). Proceed on Westchester Avenue (120A) which takes you under 287 to the fourth light and turn right into 800 Westchester Avenue Visitor's Entrance.

**From I-95**

Take exit 21 (I-287 west) to exit 10 (Bowman Avenue/Webb Avenue). Go straight through the first light. At the 2nd light bear right onto Westchester Avenue. Go through the next light and then take the next right into 800 Westchester Avenue Visitor's Entrance.

